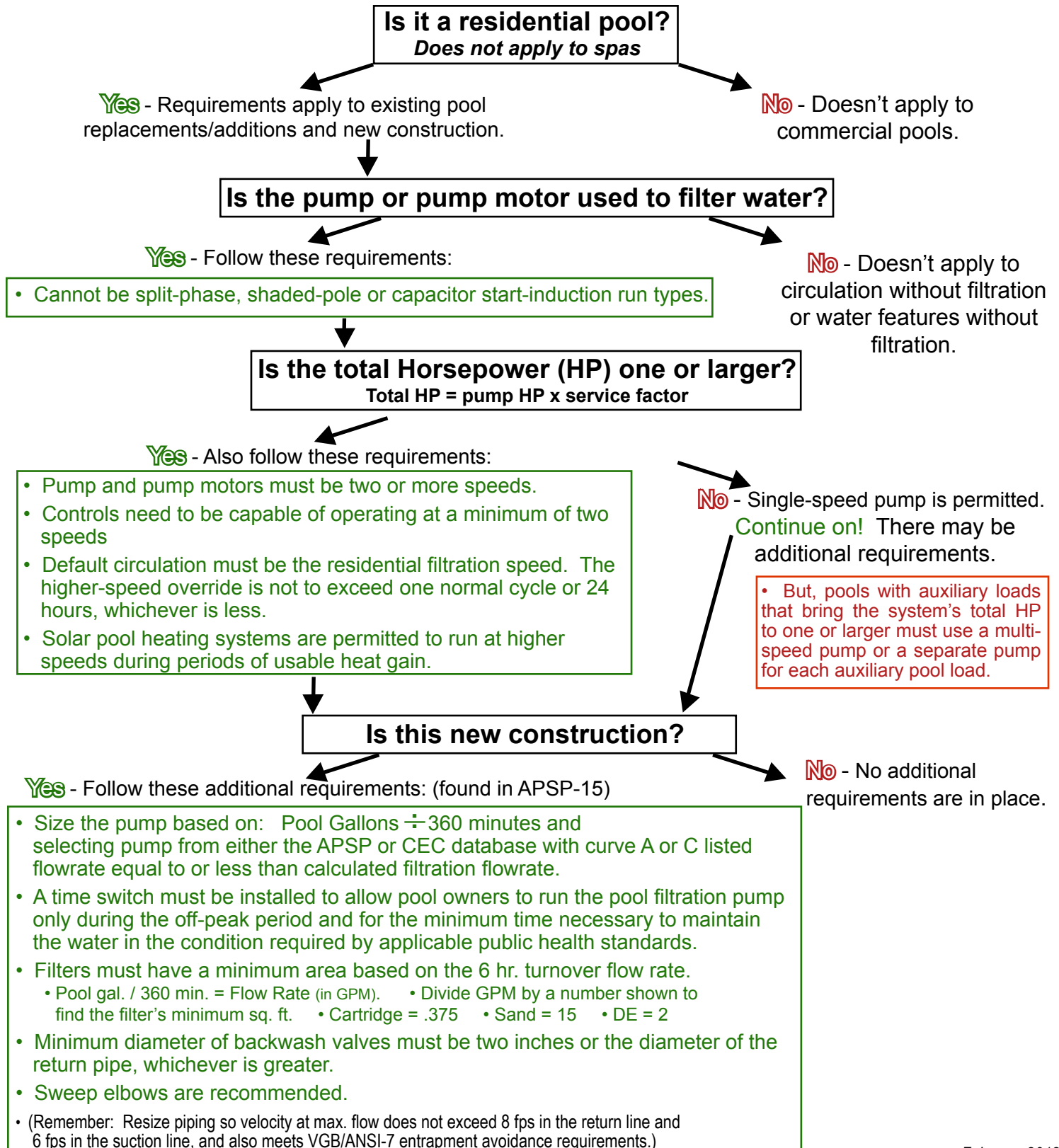


# 2011 Pool Pump / Pump Motor Energy Efficiency Requirements

**March 15, 2012** - Enforcement will begin. Installation of pumps / pump motors must comply with the requirements found in the 2010 Florida Energy & Conservation Code and be done by a licensed pool contractor.



# Additional Information and Revisions to the Florida Building Code (new construction)

**Heaters** - commercial and residential pools and spas - (these have already been in effect in FL)

- Fossil Fuel / Gas
  - 78% minimum fuel efficiency for gas-fired and oil-fired pool heaters.
  - No standing pilots for natural or LP gas heaters.
- Heat Pumps
  - 4.0 minimum COP as per the AHRI 1160 low temp test.
  - All heaters must be equipped with a readily accessible on / off switch on the outside of the heater that allows shutting it off without adjusting the thermostat setting.

## Filtration / Plumbing

- Design flow rate must not turn over pool water volume in less than six hrs. or 36 gpm, whichever is greater.
- Water flow velocity at maximum flow rate must not exceed 8 ft/sec in the return line and 6 ft/sec in the suction line.
- Solar access stubs must be separated by a minimum 18" (horizontal or vertical) of straight pipe.
- Backwash or multi-port valves must be a minimum of 2" or the diameter of the return pipe, whichever is greater.
- Directional inlet fittings are required.
- For pool filtration pumps a length of straight pipe that is at least 4 pipe diameters shall be installed before the pump.

## Portable Spas

- The law requires portable spas to meet a certain standby power, based on the industry test protocol. This requirement must be met by the portable spa manufacturer in accordance with APSP-14.

## Covers

- Heated pools and in-ground spas must be equipped with a vapor retardant cover or other approved means (including liquid covers). Heating systems deriving 70% or more of their energy source from site / renewable means are exempt.

## Controls

- All residential filtration pump controls for use with a multi-speed pump must have the capability of operating a minimum of two speeds with a default to the lower / filtration speed after one normal filtration cycle or 24 hours, whichever is less. (If existing controls are replaced, the new controls must meet requirement.)

## Enforcement

- Building departments will enforce these pool pump and pump motor requirements on both new and existing construction. If a particular building department does not require a permit for a replacement pump or motor on an existing pool, this does not discount that the law and code requires the replacement pump/motor to be two speed or greater. \*Note: If repairing an existing pump or pump motor, an existing single speed pump or motor can still be used, but if it is being replaced and is no longer under the original manufacturer's warranty, the new requirements kick in.